

NUKON[®]



[/nukonlaser](#)



[/nukonlasercuttingmachine](#)



[/nukontube](#)

NUKON®





WE SAID "THAT'S NOT HOW IT SHOULD BE DONE",
**WE CREATED A
DIFFERENCE**

In 2008, while we were still in the position of being a laser machine buyer, we saw the deficiencies everyone else saw and we were quite angry with the results such as delays of work.

When our search for solutions became unsolvable, we took the matter in our hands and we said "We wil do business as best as it can be done,". And we set out for doing what needs to be done.

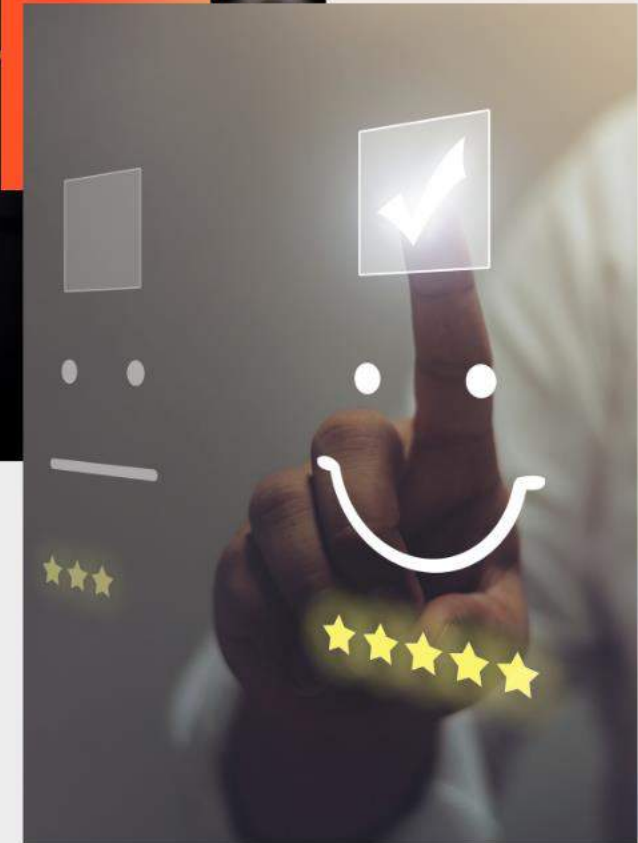
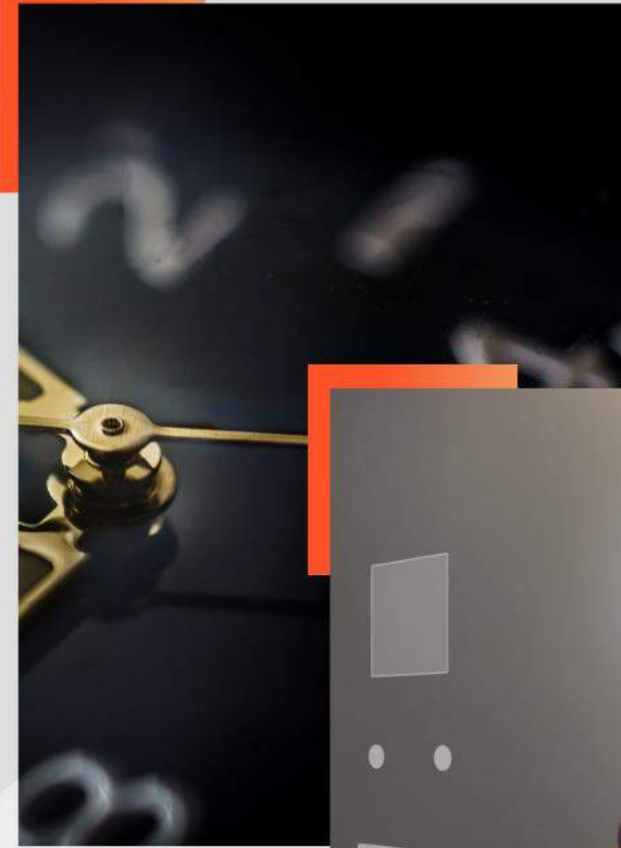
In the same year, took a step into the industry with our "NF Model" laser cutting machine.

This machine, which can satisfy the industrial requirements, adapt the intense and challenging working conditions, make difference with its quality of cutting, made a tremendous impact and created a huge demand and even surprised us with its speed by making its first export to Iran.

In 2010, NUKON, which was established in Bursa-Turkey with 100% domestic capital, started its operations as the biggest "Fiber Laser Cutting Machine" manufacturer in Turkey with its 20.000 m² production area.

While we made customer and sector demand our business plan, our only expectation was to increase of number of customers.

In fact, while doing this, we were catching up with the times, getting ahead, and creating our own strategy that is way beyond the concept of time.





Every individual in our core team of 13 people were putting their all into what we were doing, working with all they got, and feeling the rightful pride of our fast improvement and growth.

Right now, our team has become 200 employees and still continues to grow.

It still consists of dynamic, young, hardworking, and visionary people.



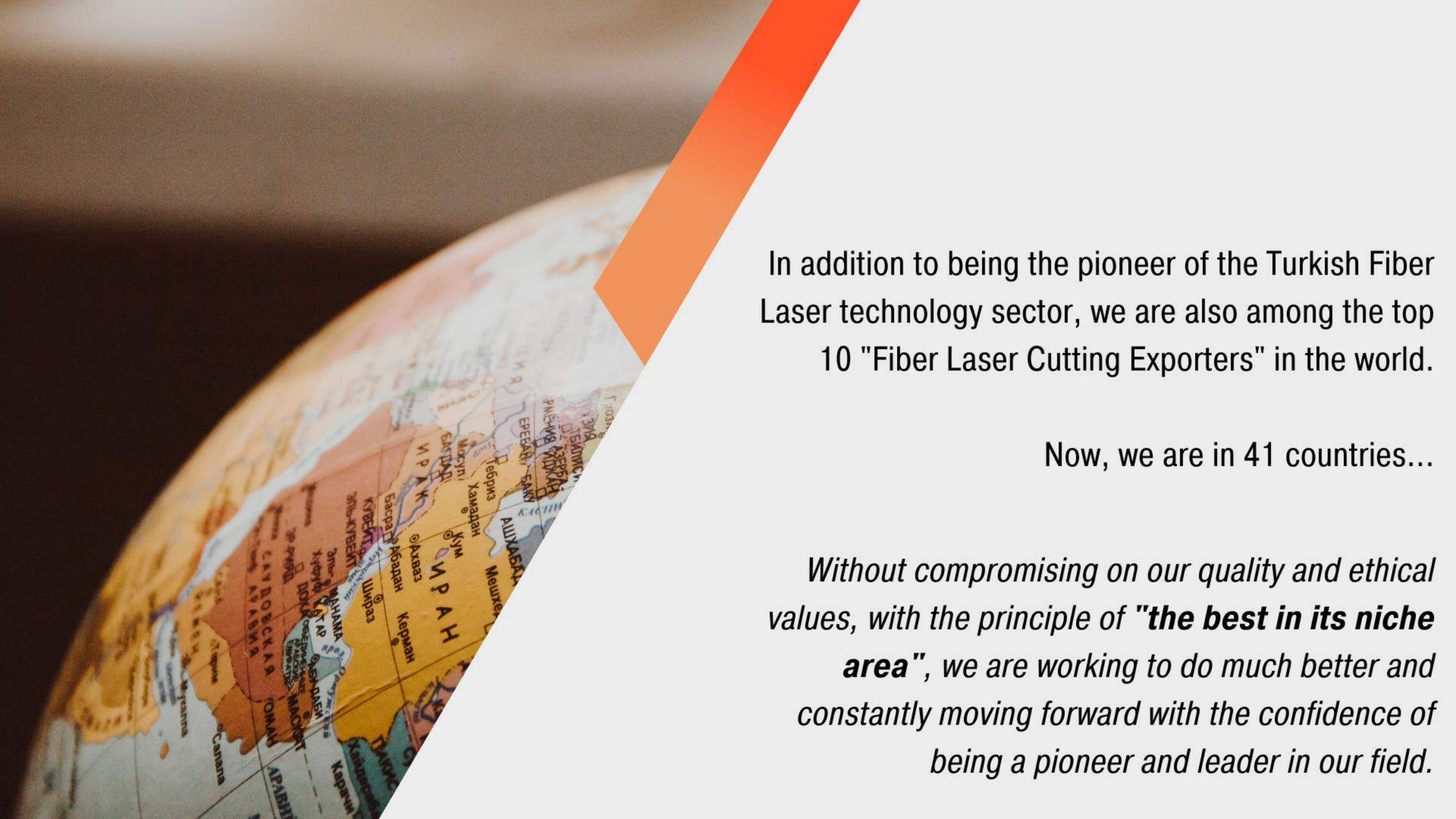
As our team grew, we also increased the number of machines to meet different demands. We are expanding our machinery every day with 9 different fiber laser cutting machines, 5 contractors, 100% Turkish capital laser cutting machine heads and much more under development.

In addition to production, we operate every machine in our production within our own structure, under the most difficult conditions, 24/7, we eliminate their deficiencies and needs, and we never stop improving and developing them.

We are aware of the consequences of the slightest disruption to the means of production. We make our customers forget about this problem with **NKN** the new structure we have created.

We are always in your service with the fastest and most efficient way with our service team of 35 engineers.





In addition to being the pioneer of the Turkish Fiber Laser technology sector, we are also among the top 10 "Fiber Laser Cutting Exporters" in the world.

Now, we are in 41 countries...

*Without compromising on our quality and ethical values, with the principle of "**the best in its niche area**", we are working to do much better and constantly moving forward with the confidence of being a pioneer and leader in our field.*

Our Schedule



2010-2014

We increased our number of machines to 4. The number of our employees reached 3-digit figures in 4 years. For us, these 4 years were 10/10.

2014-2018

With X5, we introduced Turkey with 5-axis fiber laser cutting. Our cutting head, 100% domestic production of NUKON, took its place in our machines and we were continuing to grow rapidly.

2018-2022

Today, when we have reached 20 kW of power, we are getting ready for a brand new process with our 200 employees, 9 different models of machines, 5 contractors, our cutting head, and our new 100,000 m² factory building that keeps the technology alive in the office.

THE GOAL

Creating a difference by developing our machinery in a way that it will be a pioneer in the sector and meet the demands. Growing our family globally without compromising on our past goals.



Thank you

We would like to express our gratitude to you, who were with us and trusted us from the very beginning.

**FOR THE BETTER... FURTHER
TOGETHER**



NUKON[®]
www.nukon.com.tr



NUKON[®]
FIBER LASER
CUTTING MACHINES



We process the "Chassis and Bridge" materials of all our machines through the "Heat Treatment" stage, and therefore, we guarantee their long-term durability and rigidity.

We use "Aluminum" as the material of our bridges, we support your income with the "Light Material=Energy Saving" principle.

After the heat treatment process, we mill the body in one go and ensure that its perfect two-way equality is achieved.



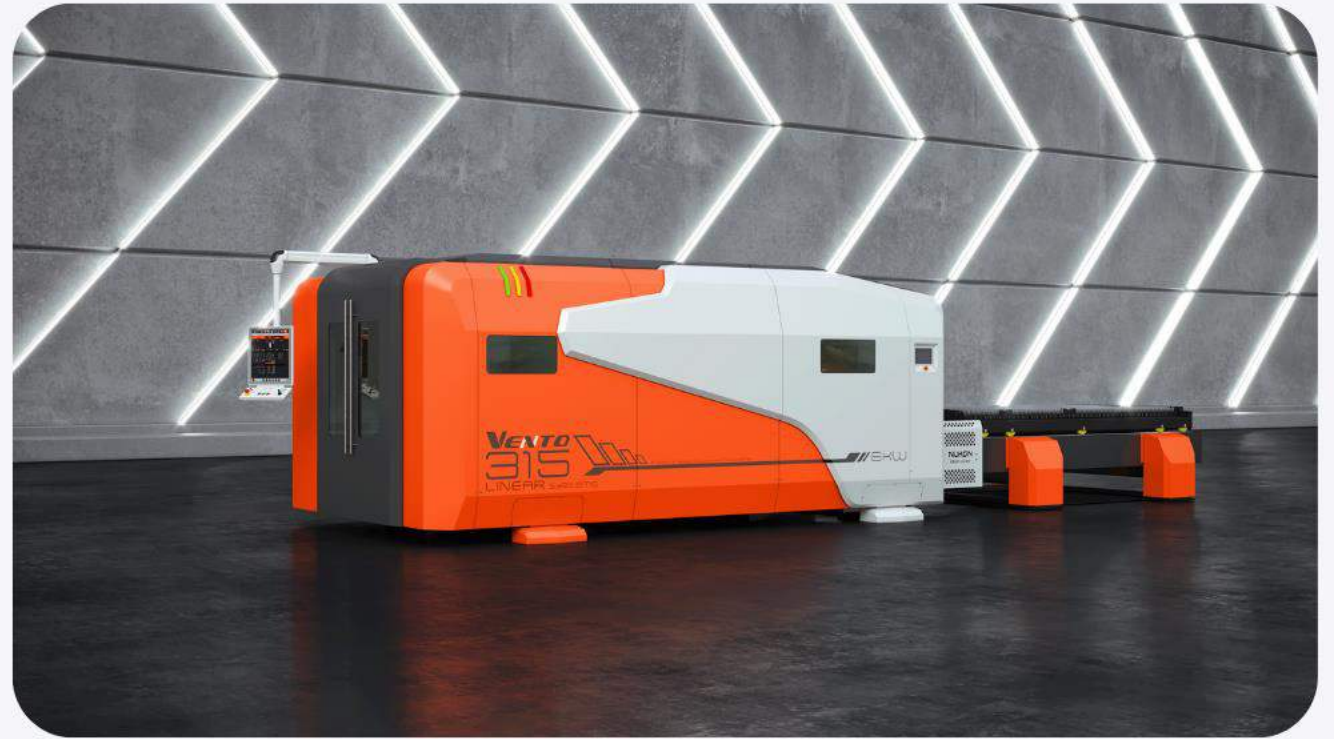
2D

**FIBER LASER
CUTTING MACHINES**

NEXT.

Vento model has high productivity and upper segment standards.

- 4 kW, 6 kW, 8 kW, 10 kW, 12 kW and 15 kW laser power options.
- Our awarded design not only gives you eye-pleasure but also enables an advantage for you to step forward in the competition with its technological superiority.
- Speed, sensibility, reliability and low operating cost with linear system, nozzle cleaning, auto nozzle changing, loading/unloading system and more features.
- Edge detection camera
- Automatic nozzle changer
- Linear
- Cutline
- Automation systems



VENTO 315/420/620 LINEAR SYSTEM
Vento Fiber Laser Cutting Machine



REX 315
REX Fiber Laser Cutting Machine

REX stands out with its compact structure and it also has the advantage of cutting pipe and profile.

- 2 kW, 3 kW, 4 kW, 6 kW and 8 kW laser power options.
- REX model also provides pipe and square profile cutting option in addition to metal sheet cutting. This is ideal for companies those are working with special pieces.
- REX model can be equipped with linear motors on X- Axis (the bridge) to achieve better precision and faster travelling speeds
- Nozzle cleaning, cut detection, piercing sensor, loading/unloading system and more features.
- Pipe cutting
- Cutline
- Automatic nozzle changer
- Linear
- Hybrid



With its robust body structure and flexible production dimensions, NF PRO series, which emphasizes productivity, can meet all requirements for cutting.

- 2 kW, 3 kW, 4 kW and 6 kW laser power options.
- Optionally, it can also be modified with automation systems.
- You can maximize your efficiency and work 24/7.
- Nozzle cleaning, loading/unloading system and more features.
- Automatic nozzle changer
- Cutline
- Automation systems
- Bevel cutting



NF PRO 315/420/620
NF PRO Fiber Laser Cutting Machine



ECO 315
ECO Fiber Laser Cutting Machine

With its small footprint and low operating costs, it is the most suitable machine series for businesses with limited budget.

- 1kW, 2kW, 3kW and 4kW power options.
- Unlike conventional rear-loading models, the auto-changing tables are on the side of the machine.
- It has a compact design that can be easily installed on an area of just 7m x 7m.
- Compact design
- Economic
- Shuttle tables
- Automation systems



Nukon also provides special solutions to its customers with customized sized machines.

- **Bevel Cutting Extreme Large**
3m x 24m / 10 x 80 ft

- Cutting head can rotate +/-45 degrees on A and B Axis.

- Bevel cut is an ideal solution for cutting welding edges with full CNC control. It has fast positioning and precise cutting ability. It has the feature of changing angle during cutting and making straight cutting with different angles on the same part.

- **NF-PRO 25125**

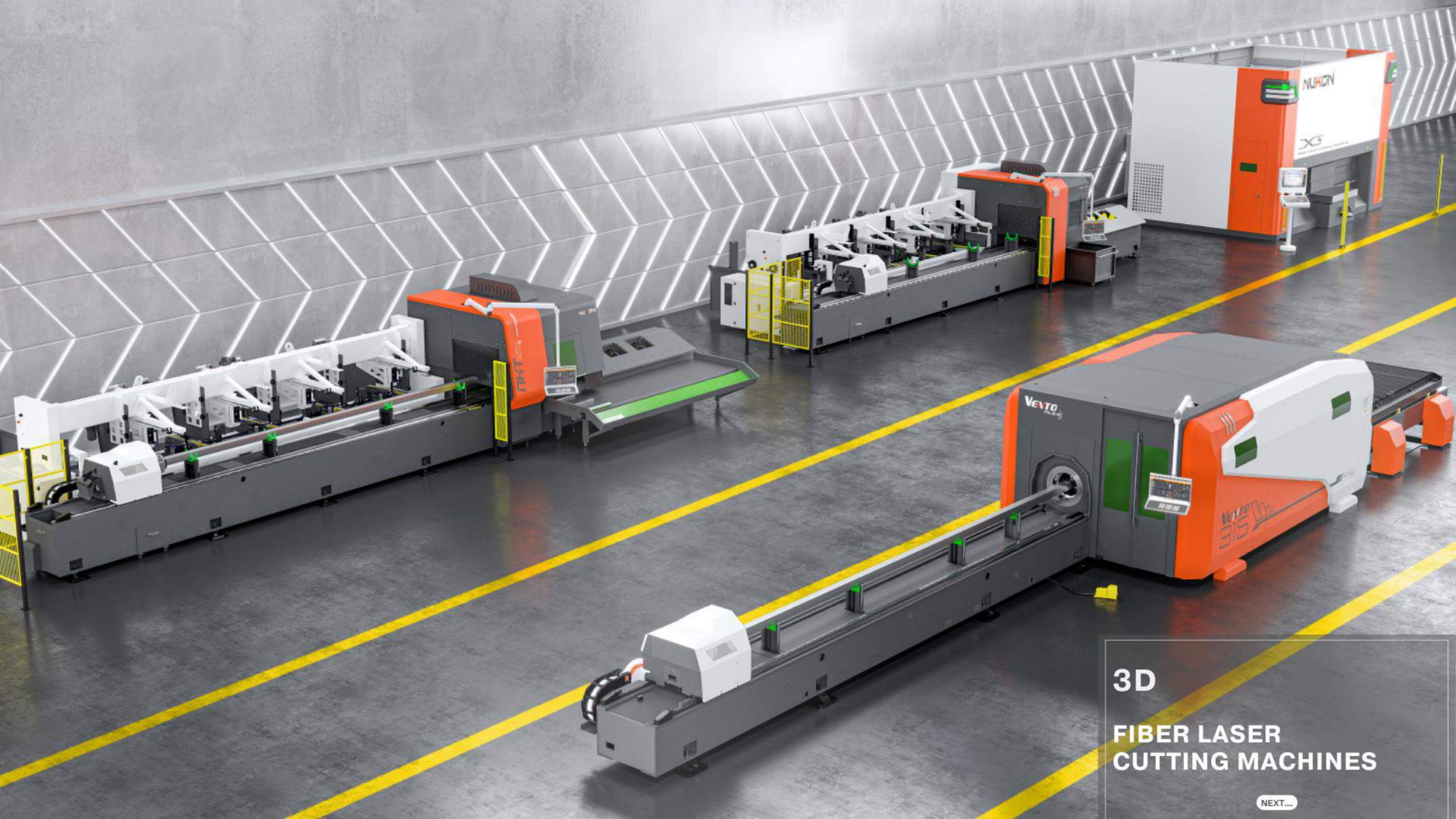
- 2530mm x 12550mm / 8.2 x 40 ft
- Auto changing dual shuttle table

- **NF-PRO-S 820 / NF-PRO-S 1020**

- 2030mm x 8050mm
- 2030mm x 10050mm
- Auto changing dual shuttle table



Special Products



3D

**FIBER LASER
CUTTING MACHINES**

[NEXT...](#)



VENTO FLEX 315/420/620

Vento Flex Fiber Laser Cutting Machine



- Our new design Vento Flex model has high productivity and upper segment standards. With its unique design, it is possible to cut both sheets and tubes.
- Vento Flex has 1530mmx3050mm, 2030mmx4050mm or 2030mmx6050mm size with auto dual shuttle table. You can cut pipes and profiles with $\varnothing 15-150\text{mm}$ diameters up to 6500mm length.
- 2 kW, 3 kW, 4 kW and 6kW laser power options.
- Speed, sensibility, reliability and low operating cost with sheet loading system, sheet loading-unloading system and more features.
- With a single button, you can switch from sheet cutting to tube cutting without needing any other equipment.
- Cutting table
- Feeding chuck
- Frond chuck
- Supports

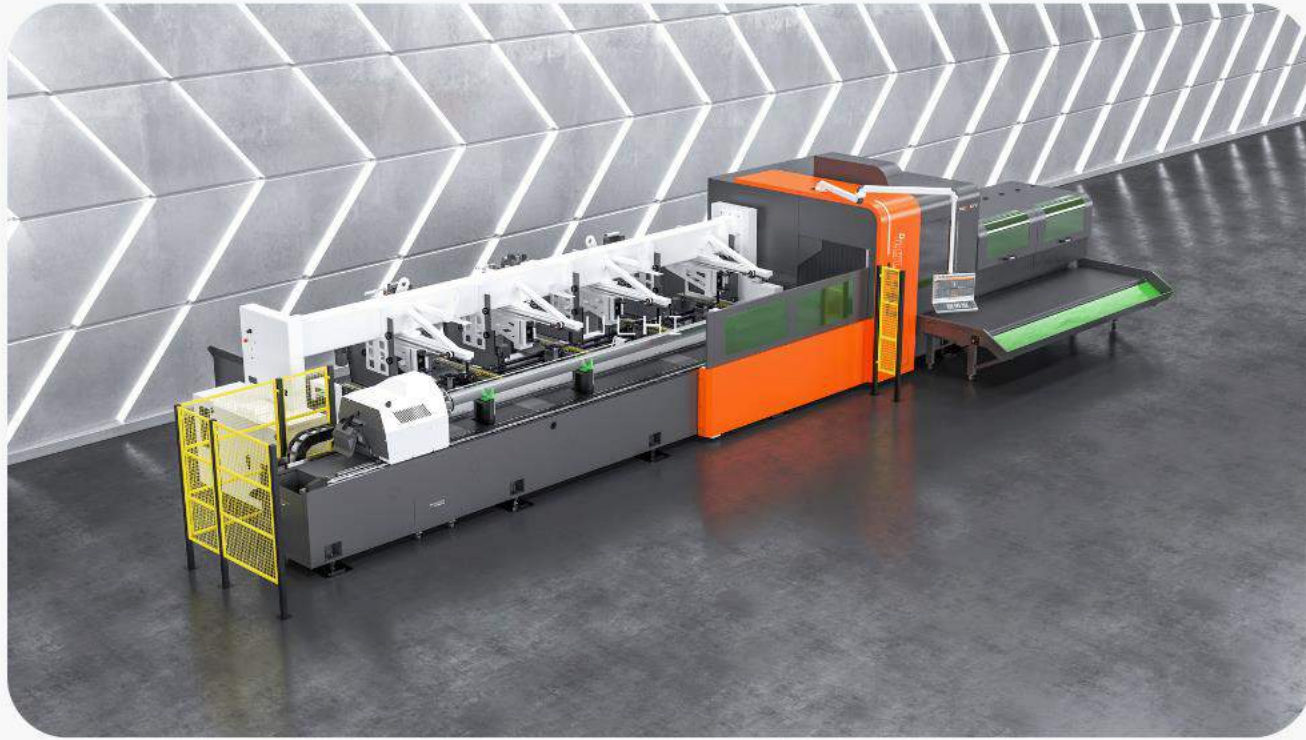


Professional pipe and profile cutting machine with a wide range of functional options.

- The machine can be produced with 1kW, 2kW and 3kW power options.
- The machine is suitable for pipe, square profile, rectangular profile cutting.
- The maximum cross section that can be cut in the machine is 125mmx125mm for profiles and $\varnothing 180\text{mm}$ for pipes.
- The machine can work for profiles or pipes up to 6500mm in length.
- Feeding chuck
- Front chuck
- Automatic loading system
- Supports
- Automatic unloading system



NKT125



NKT160

- Pipe and Profile Fiber Laser system is used to process pipes or profiles produced in different materials and shapes in many sectors such as agricultural machinery, machine tools, defense industry, Automotive sector and industrial shelf sector.
- The machine is suitable for pipe, square profile, rectangular profile cutting.
- The machine can be produced with 2kW, 3kW and 4kW power options
- Profiles or pipes in bales are loaded into the machine by an automatic loading system.
- The maximum cross-section that can be cut in the machines is 200mmx100mm for profiles, Ø226mm for pipes.
- The machine can work for profiles or pipes up to 6500mm in length.
- Bevel cutting
- Automatic centering
- Weld seam detection



5 Axes Fiber Laser Cutting Machine

- Installation Area:
6700mmx7430mmx3700mm NxLxH
- Working Range (x,y,z,) :
3050mmx1300mmx600mm
- Rotary changer: 4000 mm
- 2kW, 3 kW and 4kW laser power options.
- 2 or 3 stations options.
- The versatile laser cutting station NUKON X5 is developed for cutting wide variety of 3D forming parts by huge working space



5 Axes Fiber Laser Cutting Machine

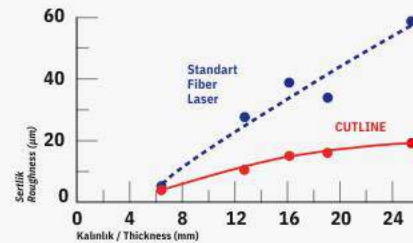
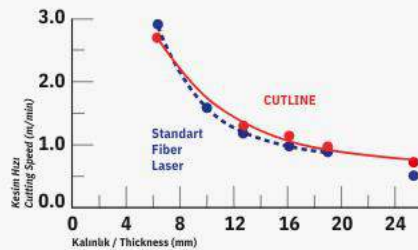
CUTLINE

TECHNOLOGY



CUTLINE Technology allows you to achieve better quality results on cutting surfaces compared to standard cuts.

Nukon is using a cutting technology called CutLine, which provides rapidly tunable beam quality at high-kilowatt power levels. These fiber lasers employ a new technology to deliver a wide range of beam shapes and sizes directly from the laser output fiber to improve cutting quality. CutLine fiber lasers are currently available with output powers from 4 kW to 15 kW.





NUKON

AMH 135/3100

BENDING MACHINES

NEXT...



AMH 135/3100

CNC HYDRAULIC PRESS BRAKE

- Control unit ESA S875W 21.5" 2D Multi-Touch Display.
- Y1-Y2 cylinder, X-R backgauge axes with servo motorized.
- Crowning system controlled via CNC unit .
- Fast die clamping system.
- European norms CE certificate .
- Fiessler AKAS II LC FMSC laser safety system.
- Switched side and rear casing.
- European type split upper and lower mould clamping type.
- Ball flange front sheet support system (with T-slot and stopper).



AUTOMATION

NEXT...

- By reason of single car, installed power is lower than Expert Lift.
- It allows to produce without requiring operator intervention.
- Supported rakes for scratch-free unloading.
- It is more suitable for single machine.
- System's height is less than Expert Lift. It provides less space by volume for customer place.
- Vacuums and rakes are combined on the same unit. It provides less electricity consumption.
- It submits different lay-out.



Compact Lift



Expert Lift

- Loading and unloading is done automatically on your machine with Expert Lift Compact.
- It provides the solution for more machines.
- Sheets which are separated by vacuum suction cups is transferred to the pallet exchange table.
- It allows to produce without requiring operator intervention.
- Vibrating system is used to separate the sheet which are stuck together.
- The machine Works with loading-unloading system to increase the capacity utilization.
- It minimizes space requirements with compact design.
- Expert Lift Compact can be installed both side of Nukon lasers according to request.
- It provides the exact solution of single sheet detection with sheeting magnet and double-plate control system.
- We use high quality pads Germany Schmalz brand which has double suction for vacuuming.



- Tower System provides excellent solution for continuous production by combining automated pallet change with compact storage technique.
- More efficient operation is provided owing to automated operation.
- Getting high quality owing to transport of sheet without scratching and deforming.
- Non-stop cutting is continued.
- Integration of the processing machine.
- Modular structure that can grow according to the request.
- Lower costs due to the compact lay-out.
- %75 saving time of loading-unloading.
- Fast, safety , easy usage.
- Cost of low purchase.



Tower Systems



Lift Tech

- LIFT TECH has been designed for loading sheets to machines automatically.
- Machine operates at high efficiency and increases capacity of production with LIFT TECH.
- LIFT TECH create lower costs by increasing productivity with a connected system from stock to machine.
- The LIFT TECH can load to all 315 models.
- We use special designed reducer and motor to increase the quality of machine usage.
- Positioning is provided by servo-motors.
- We use high quality pads Germany Schmalz brand which has double suction for vacuuming.
- Dry-type vacuum pump is used with 25 m³ / h capacity.



- N-LIFT has been designed for loading sheets to machines automatically.
- Machine operates at high efficiency and increases capacity of production with N-LIFT.
- N-LIFT minimizes space requirements with compact design.
- N-LIFT, thanks to the automation system can be programmed structure.
- We use high quality pads Germany Schmalz brand which has double suction for vacuum.
- Dry-type vacuum pump is used with 25 m³ / h capacity.
- Safety system sensors are available in the workplace.
- It has flexible structure with 76° angle which can load to machine.





NUKON NLCH

It is equipped with optics and hardware that supports up to 30kw resonator power. It has a renewable structure. Stores all hardware in a single body. It has a 100% aluminum body. NLCH is the result of long-term R & D studies. Its main purpose is to allow maintenance and optic change in the field.

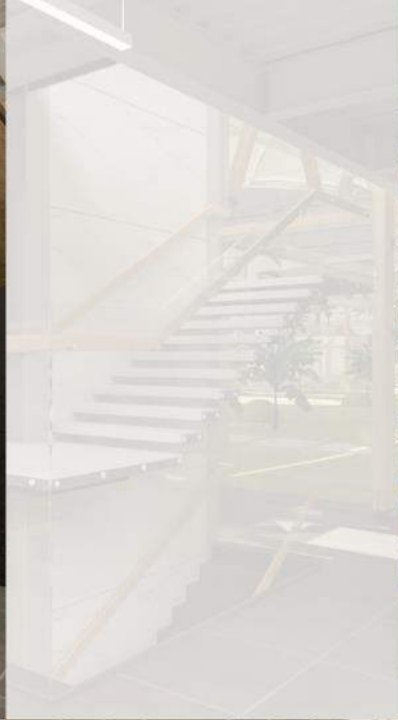
Some features:

- Optical structure supporting up to 30kw
- Contamination and temperature control of all optics
- Piercing sensor control
- Collimator and lens cooling with water
- Integrated gas pressure sensor
- Automatic optical calibration system
- Auto focus, feedback feed
- On-site service feature (Optical change)





- | | |
|-------------|--------------|
| USA | ITALY |
| GERMANY | KAZAKHISTAN |
| AUSTRALIA | LIBYA |
| BELARUS | LEBANON |
| UNITED ARAB | HUNGARY |
| EMIRATES | MALAYSIA |
| BOSNIA AND | MEXICAN |
| HERZEGOVINA | SWEETCORN |
| BULGARIA | NIGERIA |
| CZECHIA | POLAND |
| DENMARK | PORTUGAL |
| FRANCE | ROMANIA |
| SOUTH KOREA | RUSSIA |
| GEORGIA | SERBIA |
| CROATIA | SLOVAKIA |
| HOLLAND | SLOVENIA |
| IRAQ | SAUDI ARABIA |
| ENGLAND | UKRAINE |
| IRANIAN | VIETNAMESE |
| SPAIN | NEW ZELAND |
| ISRAEL | GREECE |



OUR NEW FACTORY BUILDING WILL BE IN YOUR SERVICE SOON...

Our new "Nukon Laser" factory building is being prepared to operate in a construction area of 100,000 m² with all its technological infrastructure and new generation office approach.

We will be with you in a brand new process with 200% capacity increase in our new factory, new stock investments, new machines and new services.





THANK YOU

<https://www.nukon.com.tr/>